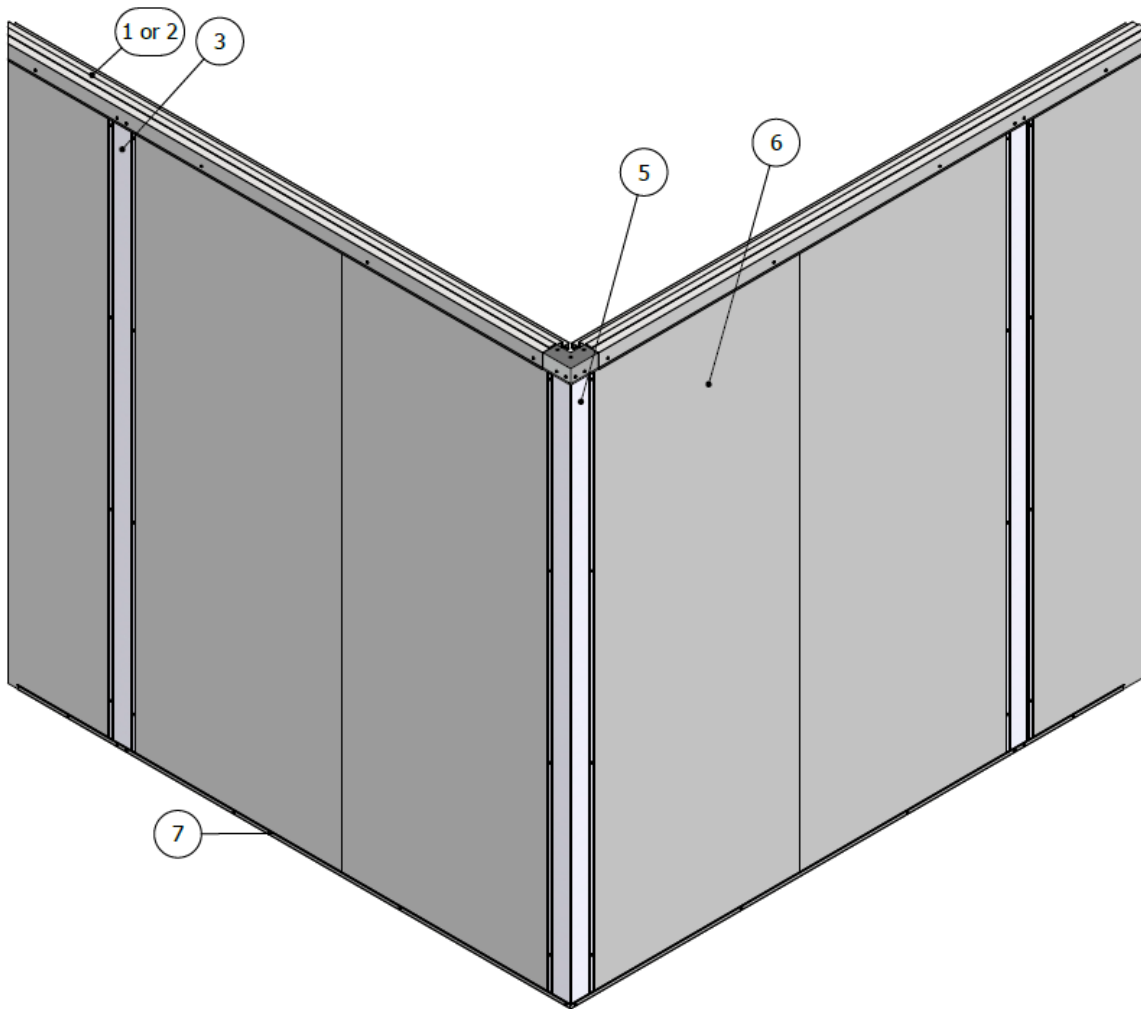




Typical Airtho Modular Wall Configuration



Parts List

Item No	Part Number	Description
1	PP-HT-(Length)-(Finish)	Airtho Perfect Plenum Head Track with Strut Channel – 20ft
2	AMW-HT	Airtho Modular Wall- Head Track
3	AMW-PP	Airtho Modular Wall- Power Post
4	AMW-WT	Airtho Modular Wall- Wall Track
5	AMW-CP	Airtho Modular Wall- Corner Post
6	AMW-IMP	Airtho Modular Wall- Insulated Metal Panel
7	AMW-FT	Airtho Modular Wall- Floor Track



Airtho Part Nomenclature

(Part) – (Type) - (Length) - (Finish) – (color)

Part – Airtho part (e.g. PP-, IG-, AMW-, etc.)

Type – (e.g. WM, M, HT, WT, FT, etc.)

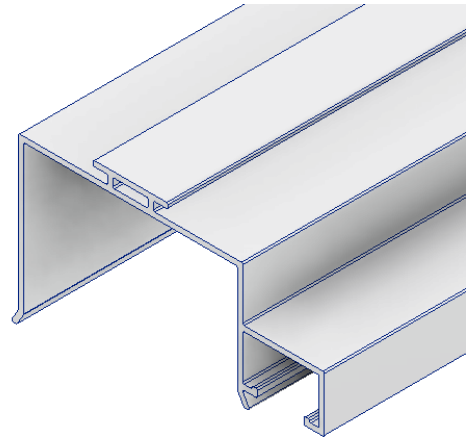
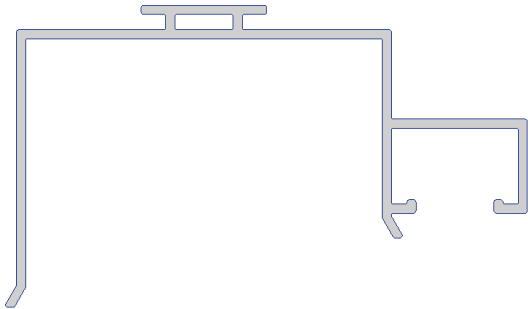
Length – units = [feet]

Finish – (e.g. MF = Mill Finish, PC = Powder Coat)

Color – if applicable (e.g. red, blue, white, etc.)



PP-HT



Material: Aluminum 6005A- T61

Finish

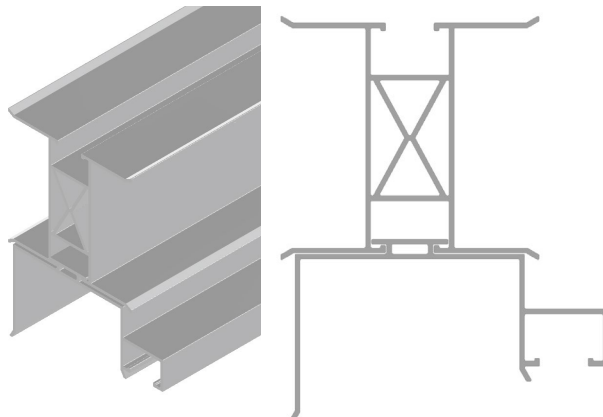
- Mill Finish (-MF, End of Part Number)

Specifications

- Height: 3.37 in
- Width: 6.00 in
- Standard Supplied Length: 240 in
- Weight: 0.146 lb/in

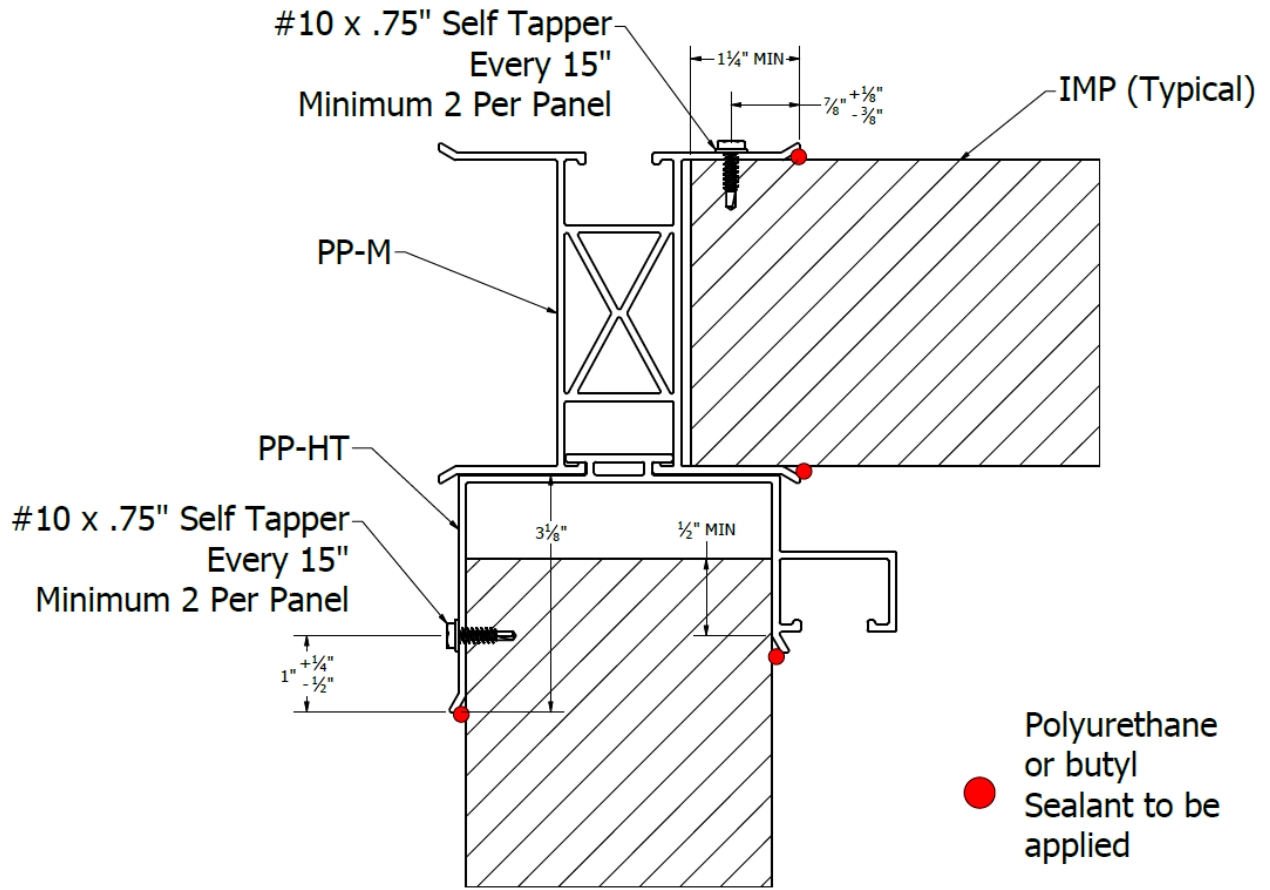
Features

- Sealant pocket for complete seal
- Integrated strut channel for attaching accessories and hanging Intelligrid
- Only used with PP-M (See Picture Below)





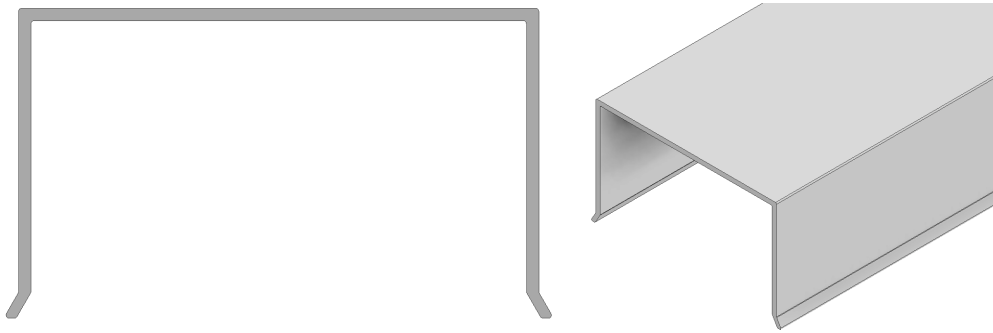
Typical Assembly



Wall to Plenum Cap Side View



AMW-HT



Specifications

Material: Aluminum 6005A- T61

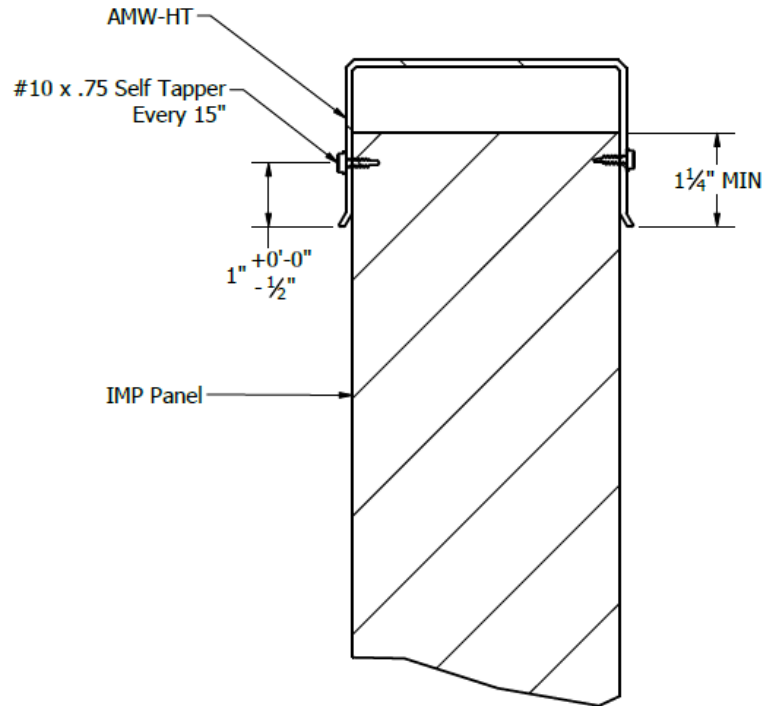
Finish

- Powder coat – Bright White

- Height: 2.5 in
- Width: 4.4 in
- Standard Supplied Length: 120 in
- Weight: 0.0558 lb/in

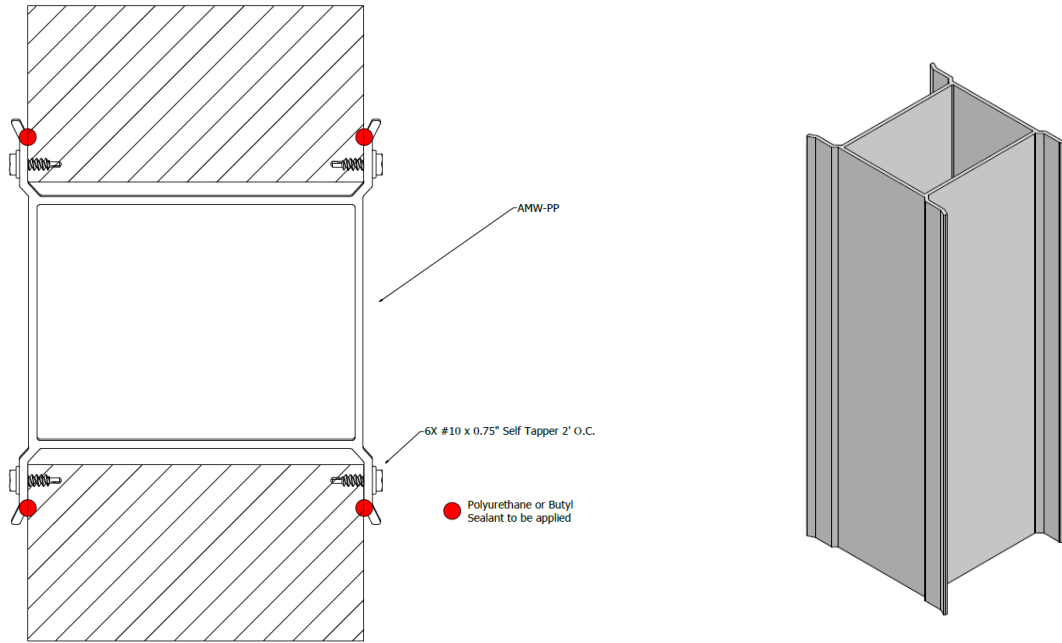
Features

- Sealant pocket for complete seal





AMW-PP



Top View

Material: Aluminum A6005A- T61
or Powder Coated Steel

Finish

- Powder Coated Finish - White

Specifications

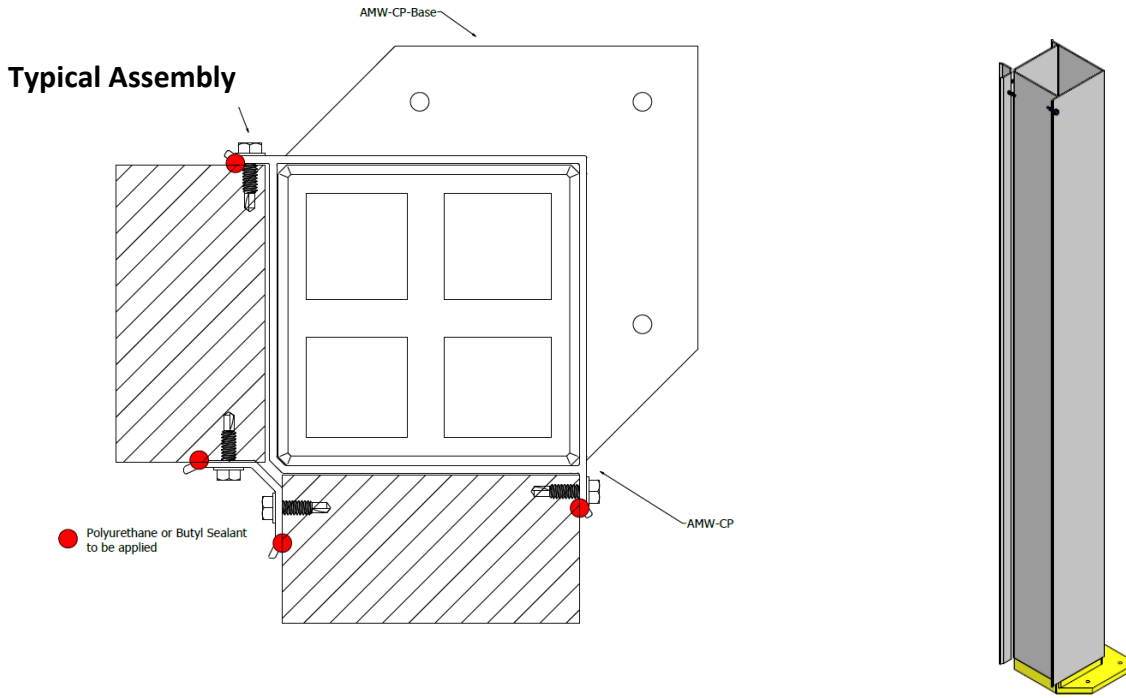
- Height: 4.385 in
- Width: 4.788 in
- Supplied Length: 15 ft
- Weight: 0.16 lb/in

Features/Options

- Sealant pocket for complete seal



AMW-CP



Top View

Material: Aluminum 6005A- T61
or Powder Coated Steel

Finish

- Powder Coated Finish - White

Specifications

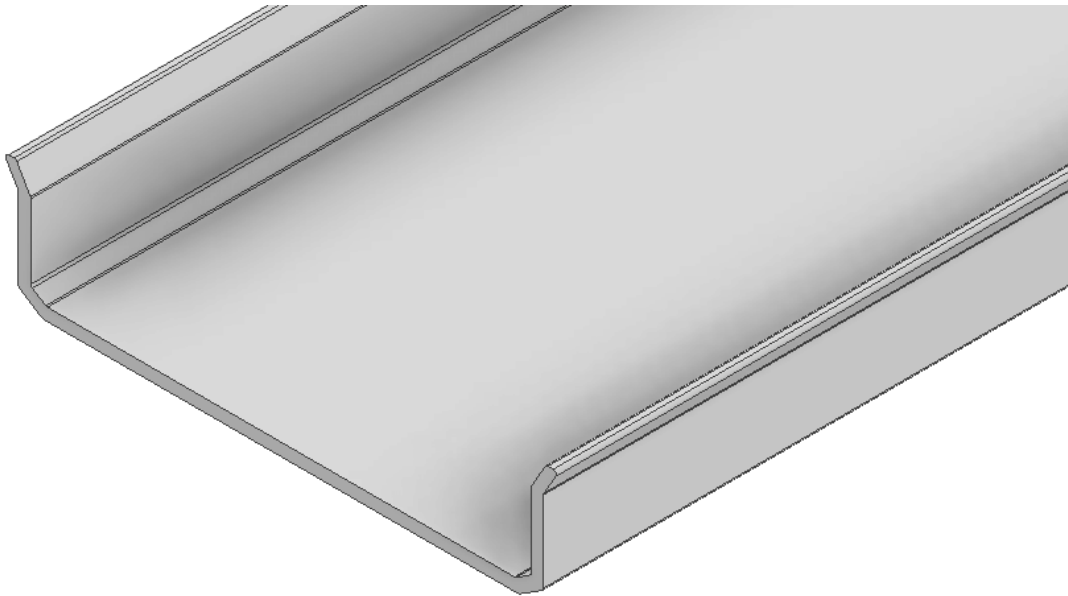
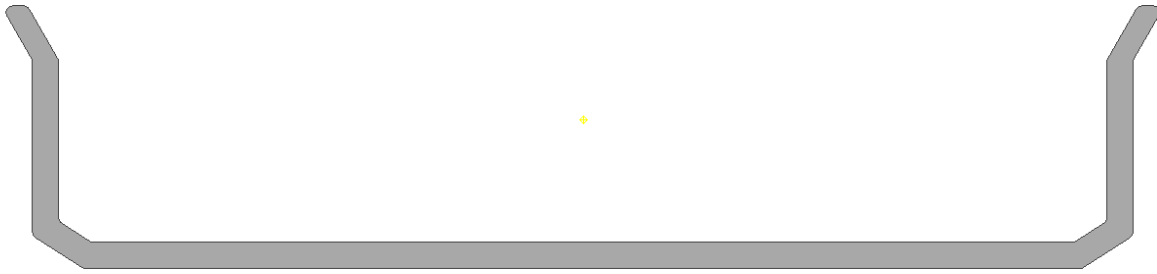
- Height: 4.88 in
- Width: 4.88 in
- Standard Supplied Length: 15 ft
- Weight: 0.16 lbs/in

Features

- Sealant pocket for complete seal



AMW-FT



Material: Aluminum 6005A- T61
or Powder Coated Steel

Finish

- Powder Coated Finish - White

Specifications

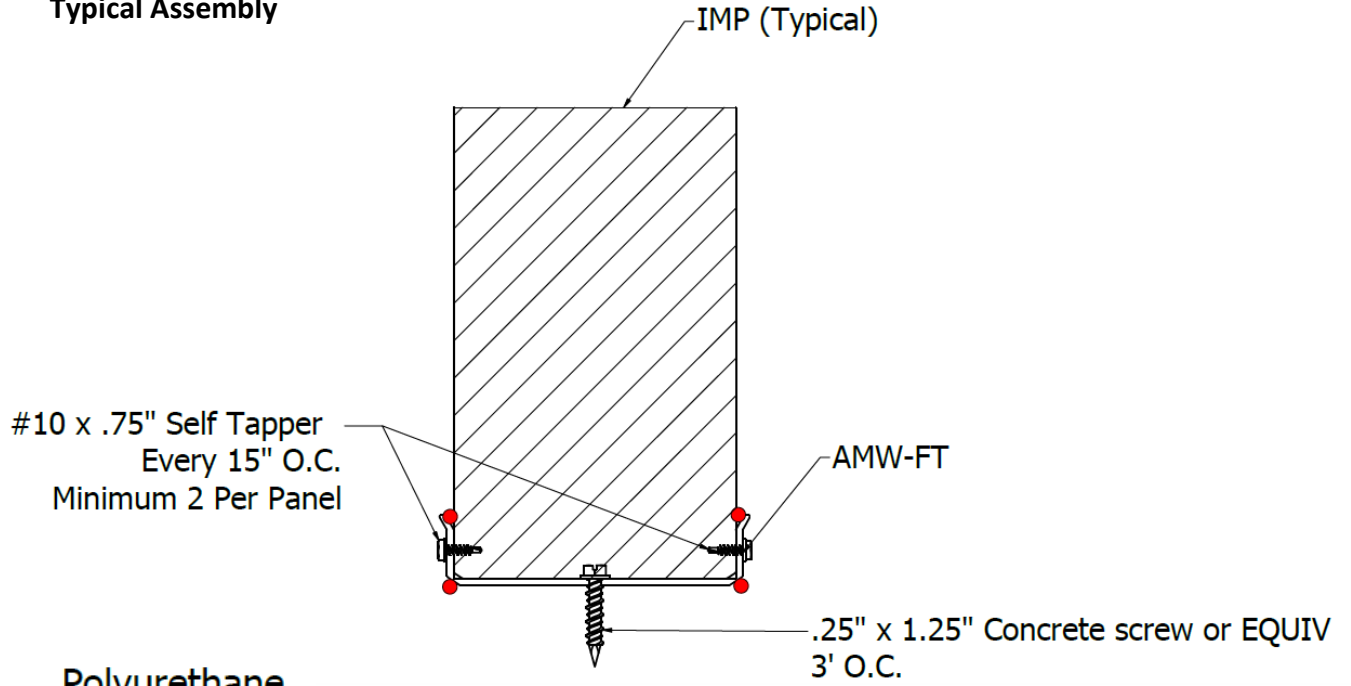
- Height: 1 in
- Width: 4.4 in
- Standard Supplied Length: 120 in
- Weight: 0.0367 lb/in

Features

- Sealant pocket for complete seal



Typical Assembly

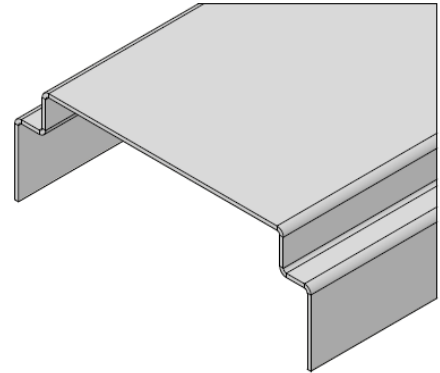


● Polyurethane or butyl Sealant to be applied

Wall to Floor Side View



AMW-WT



Material: Aluminum 6005A- T61
or Powder Coated Steel

Finish

- Powder Coated Finish - White

Specifications

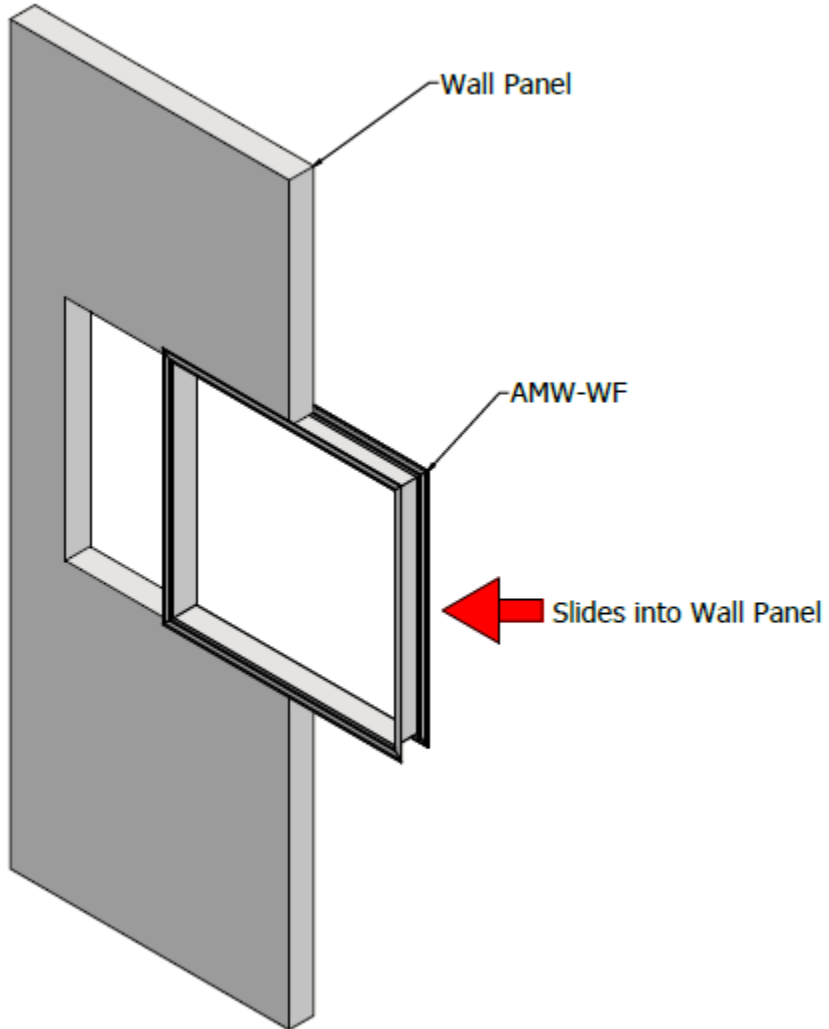
- Height: 1.5 in
- Width: 4.1 in
- Supplied Length: 120 in
- Weight: 0.037 lb/in

Features

- Sealant pocket for complete seal
- Mates AMW-IMP and window glass



Typical Assembly





AMW-IMP

Products & Materials

2.1 MANUFACTURERS

A. Acceptable Manufacturer: Permatherm Inc

B. Substitutions: Structall, Metl-Span

2.2 Insulated Metal Wall Panels

A. Panel General Requirements: Roll-formed exterior and interior steel sheet faces laminated to panel grade Type I (or Type IX) expanded polystyrene (EPS) foam core. EPS foam core shall not contain CFC's, HCFC's or HFC's. Insulated wall and ceiling panels shall be supplied in widths of 46 inches (+/- 1/8"). Panel lengths shall be factory cut to meet required site dimensions.

1. Panel Thicknesses:

a. 2 inches (50 mm)

g. 8 inches (200 mm)

b. 3 inches (75 mm)

h. 9 inches (225 mm)

c. 4 inches (100 mm)

i. 10 inches (250 mm)

d. 5 inches (125mm)

j. 11 inches (275 mm)

e. 6 inches (150 mm)

k. 12 inches (300 mm)

f. 7 inches (175 mm)

2.3 Materials

A. Interior Face

1. Interior wall and ceiling panels shall be clad on all exposed areas with 26 gauge (0.455 mm) pre-painted G90 galvanized steel or AZ-50 Galvalume (USDA accepted).

B. Exterior Face

1. Exterior insulated panels shall be clad on the weather-exposed side with 26 gauge (0.455 mm) pre-painted G90 galvanized steel or AZ-50 Galvalume (USDA accepted).

Continue Next Page



C. Lamination and Joint fabrication

1. Metal skins shall be thermal-set to the Type I (or Type IX) EPS insulation. Insulated panels shall be manufactured individually laminated, insuring uniform adhesion between metal skins and EPS insulation.
2. Panel edges shall be fabricated with a tongue-in groove type panel connection system (slip joint).
3. Slip joints shall be sealed internally by running continuous beads of FSI-96 butyl caulking (or approved alternate) along the warm inside edge of the female side of the panel joints.
4. Slip joints shall be externally caulked for USDA inspected areas only, or as specified, with white silicone (or approved alternate).

D. Foam Core:

1. Wall panels and ceiling panels shall consist of Type I (or Type IX) Expanded Polystyrene (EPS) insulation.
2. Finished panels shall have a Long Term R-Value (LTR) of 4.17 per inch at 40° F (4.44° C) for Type I EPS and a Long term R-value (LTR) of 4.76 per inch at 40° F (4.44° C) for type IX EPS . Insulation thickness of panels shall be adjusted in accordance with design R-value requirements.
3. Insulation shall not contain CFC's or HCFC's, or other expanding agents, resulting in zero ODP and zero VOC production.
4. Foam shall be Type I (or Type IX) EPS shall be manufactured with NOVA M33B or M77B bead size (or approved alternate), ensuring uniform densities throughout the insulation.
5. EPS Type I (or Type IX) panel grade insulation shall meet or exceed federal standards for Type I (or Type IX) EPS.

E. Interior finish: USDA approved Siliconized polyester paint System

F. Flashing and Trim: Brake-formed sheet metal in the same thickness and finish to match the panels.

G. Fasteners: Clips, anchoring devices, fasteners, and accessories for installation of panel system as recommended by panel manufacturer for the system specified.

H. Sealant: Sealant as recommended by panel manufacturer.

Reference:

Permatherm. (2019). Permatherm Specification: SECTION 07435 INSULATED METAL WALL PANELS.